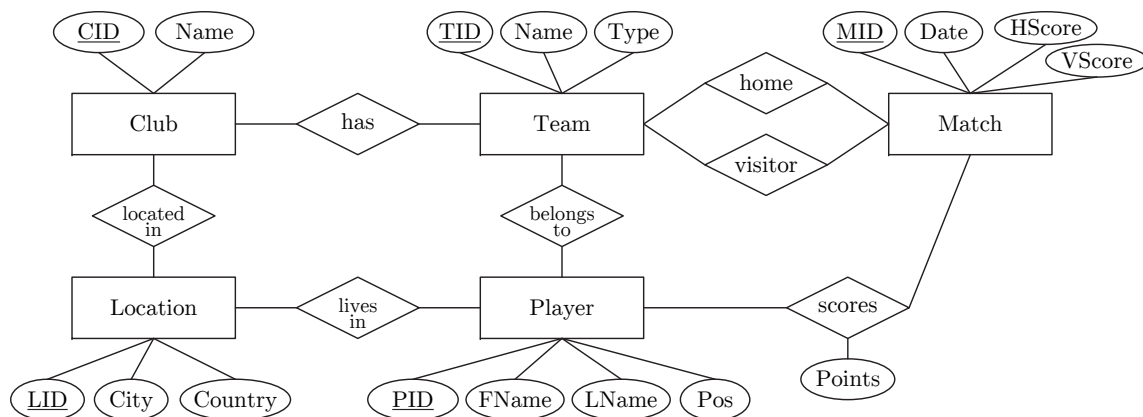


Exam INF.01017UF Data Management (Summer 2022, V1a) Exam 706.010 Databases (Summer 2022, V1b)

Important notes: The working time is 90min, and lecture materials or any kind of mobile devices are not allowed. Please, make sure to put your *name* and *matriculation number* on the top right of the first page of the task description, and each additional piece of paper. You may give the answers in English or German, written directly into the task description.

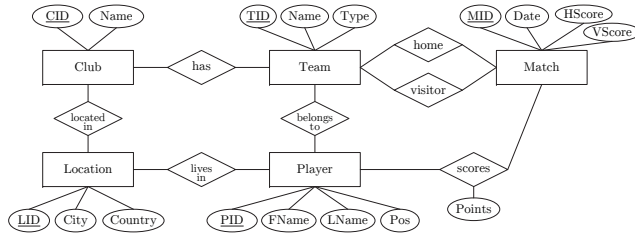
Task 1 Data Modeling (25 points)



(a) Given the above Entity-Relationship diagram, specify the cardinalities in Modified Chen notation based on the following information. (12 points)

- A sports club has at least 1 but potentially many teams, each of a certain type (e.g., men, women, U19, U17, etc). Each team belongs to exactly one club and teams consists of at least 11 but often more players. A player is part of at least one but potentially many teams (e.g., men, men II, and U19).
- Each club has a club area in exactly one location (city), each player lives in exactly one location, and any such location can, however, house an arbitrary number of clubs and players (including none).
- Teams compete in many matches but every match is conducted between exactly one home team and exactly one visiting team; the match results are reflected by the home and visit scores (HScore and VScore).
- Players might score points (contributing to the score of their teams) at arbitrary many games, but at most $2 \cdot (11 + 3) = 28$ players can score points at a single match.

- (b) Map the given Entity-Relationship diagram into a relational schema in third normal form, including data types, primary keys, and foreign keys. Your schema should also ensure that each match references a home and a visiting team. Furthermore, note that there might be cities with the same name in different countries (no FD $\text{City} \rightarrow \text{Country}$). (**13 points**)



Task 2 Structured Query Language (30 points)

Customers

CID	Name	Country
1	Red	AT
2	Orange	CH
3	Yellow	DE
4	Green	DE
5	Blue	AT
6	Violet	DE

Orders

CID	PID	Date	Qty
5	1	2021-06-29	4
6	3	2021-06-30	1
5	3	2021-06-30	2
2	3	2021-06-30	1
5	2	2021-06-30	10
3	1	2021-06-30	3
6	5	2021-06-30	1

Products

PID	Name	Price
1	Monitor	400
2	SSD	200
3	Laptop	2500
4	Tablet	600
5	Headphones	150

- (a) Given the Customers, Orders, and Products tables above, compute the results for the following three queries: **(15 points)**

Q1: `SELECT DISTINCT O.Date, P.Name
FROM Orders O, Products P
WHERE O.PID = P.PID
AND P.Price > 200`

Q2: `SELECT C.Country, count(*)
FROM Customers C, Orders O
WHERE C.CID = O.CID
GROUP BY C.Country
ORDER BY count(*) DESC, C.Country`

Q3: `SELECT C.Name, C.Country, O.Date
FROM Customers C LEFT JOIN Orders O
ON C.CID = O.CID
WHERE C.Country IN('AT', 'CH')`

- (b) Given the Customers, Orders, and Products tables above, write SQL queries to answer the following questions (in a way that is independent of the shown tuples): **(15 points)**
- Q4: Which products were ordered by customers from Germany, i.e., Country=DE? (return the product name and price)?

- Q5: Compute the revenue (i.e., $\text{sum}(\text{Qty} * \text{Price})$) per product (return the product name, revenue, sorted ascending by name)?

- Q6: Which customers did not place any orders (return all customer attributes)?

Task 3 Query Processing (17 points)

- (a) Given a relation $R(x, y, z)$ with four tuples (a, b, c) , (d, e, f) , (a, b, d) , and (d, e, g) , indicate in the table below for each relational algebra expression (row) the number of output tuples in set and bag (multiset) semantics, respectively. (6 points)

RA Expression	Set Semantics	Bag Semantics
$\pi_{x,y}(R)$		
$\sigma_{x=a \vee z=f}(R)$		
$R \cup R$		

- (b) Draw a logical query tree for the following query. (5 points)

```
(SELECT Name
  FROM Products
  WHERE Price > 750)
UNION ALL
(SELECT P.Name
  FROM Orders O, Products P
  WHERE O.PID = P.PID
  GROUP BY P.Name
  HAVING sum(O.Qty) >= 5)
```

- (c) Describe the conceptual ideas of a nested-loop join, and a hash join. Furthermore, assume $R \bowtie S$ with cardinalities $N = |R|$ and $M = |S|$, and enter the space and time complexity of these operators (in the open-next-close iterator model) in the table below. **(6 points)**

Operator	Time Complexity	Space Complexity
Nested Loop Join		
Hash Join		

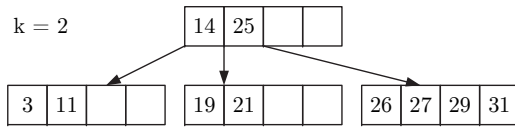
Task 4 Transaction Processing (8 points)

- (a) Explain the concept of a database transaction log, and how it helps to ensure Atomicity and Durability of changes made by uncommitted and committed transactions on failures. **(6 points)**

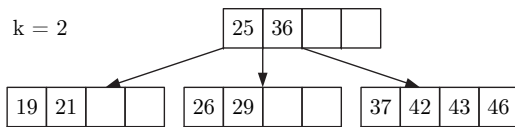
- (b) Briefly explain the concept of a transaction isolation level. **(2 points)**

Task 5 Physical Design (20 points)

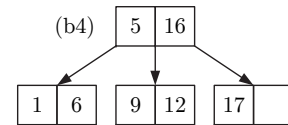
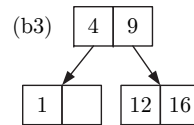
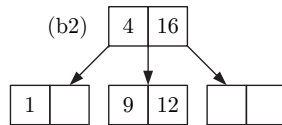
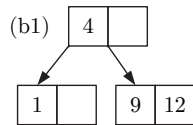
- (a) Given the B-tree with $k=2$ below, insert the keys 7 and 37, and draw the resulting final B-tree. (5 points)



- (b) Given the B-tree with $k=2$ below, delete the keys 21 and 43, and draw the resulting final B-tree. (5 points)



- (c) Which of the following trees are valid—i.e., satisfy the constraints of—B-trees with $k=1$. Mark each tree as valid (✓) or invalid (×) and name the violations. (4 points)



- (d) Recall the table **Orders** from Task 2 and perform a horizontal and vertical partitioning, respectively. Specifically, provide—for both scenarios—relational algebra expressions for partitioning **Orders** into two fragments **Orders1** and **Orders2**, as well as its subsequent reconstruction from the two fragments. (6 points)

- Horizontal Partitioning (row partitions):

- $\text{Orders1} :=$
- $\text{Orders2} :=$
- $\text{Orders} :=$

- Vertical Partitioning (column partitions):

- $\text{Orders1} :=$
- $\text{Orders2} :=$
- $\text{Orders} :=$